

INTRODUCTION OF SAMAN OFFICE TOWERS



SAMAN OFFICE TOWERS

THIS COMMERCIAL OFFICE TOWER HAS AN AREA OF 167.000 SQUARE METERS IN 50 FLOORS. THIS COMPLEX INCLUDES 9 PARKING FLOORS (UNDERGROUNDS 9- TO 1-), GROUND FLOOR, MEZZANINE, COMMERCIAL AND SERVICE FLOORS (FLOORS 1 TO 3) AND 2 OFFICE TOWERS, EACH OF WHICH INCLUDES 35 OFFICE FLOORS AND THE TOP THREE FLOORS (39TH TO 40TH FLOORS) ARE CONSIDERED FOR THE APPLICATION OF UTILITY USE AND A ROOF EQUIPPED WITH A HELIPAD.





WHY CHOOSE OUR PROJECT

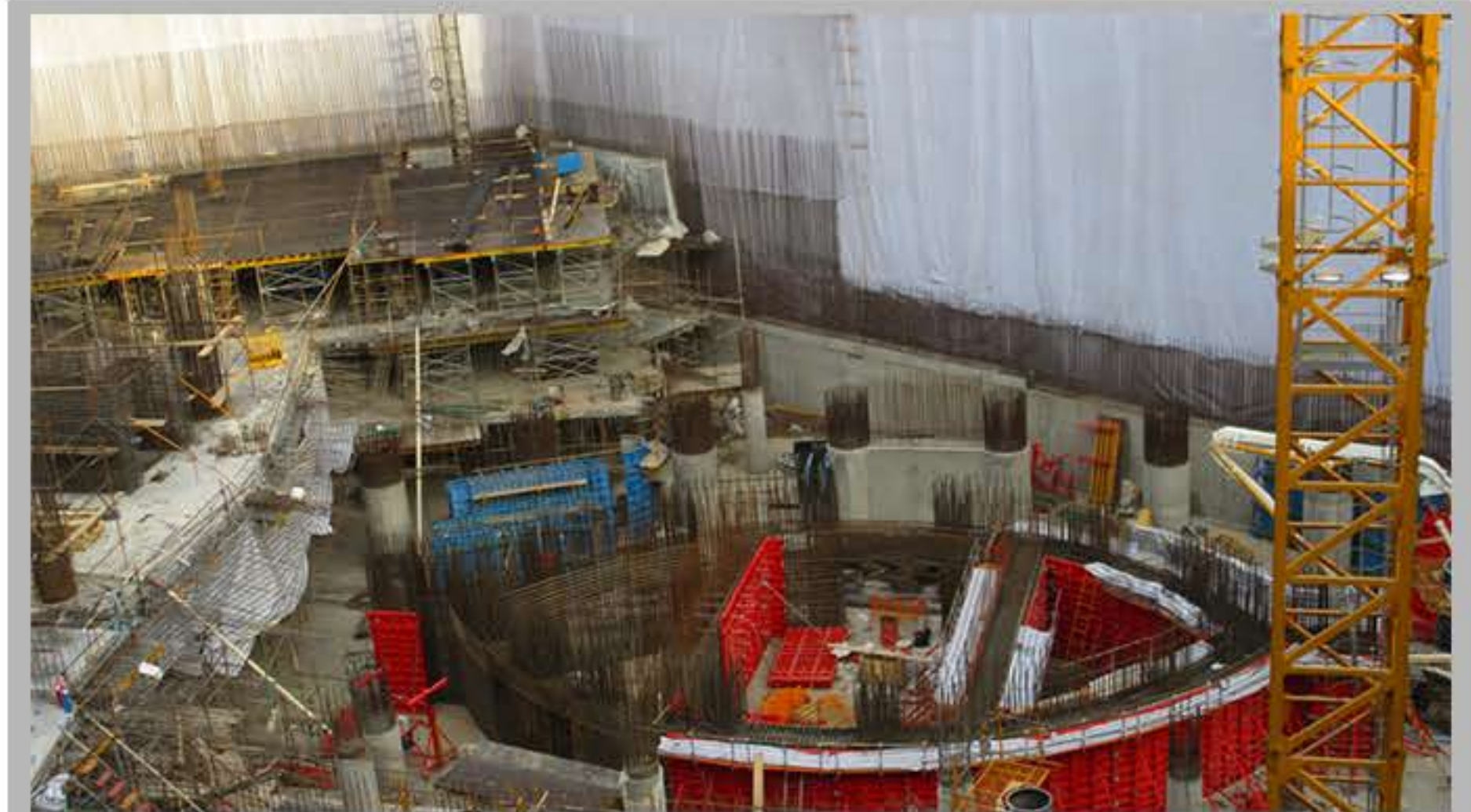
THE LAND OF THIS PROJECT IS LOCATED NEXT TO ONE OF THE MAIN HIGHWAYS, WHICH WILL PROVIDE A UNIQUE AND ELLEGANTE VIEW.



THIS PROJECT IS ONE OF THE STABILIZATION PROJECTS, DESIGNED WITH THE DEEP PIT WALLS OF COMPANY, WHICH WAS CARRIED OUT BY THE TOP-DOWN METHOD (CONSTRUCTION FROM TOP TO BOTTOM). IN THE TOP-DOWN METHOD, FOR VARIOUS REASONS SUCH AS THE SPEED OF EXECUTION, THE USE OF A METAL FRAME IS MORE COMMON THAN A CONCRETE FRAME.

SAMAN OFFICE TOWERS

THE PRIMARY CONSTRUCTION STEPS

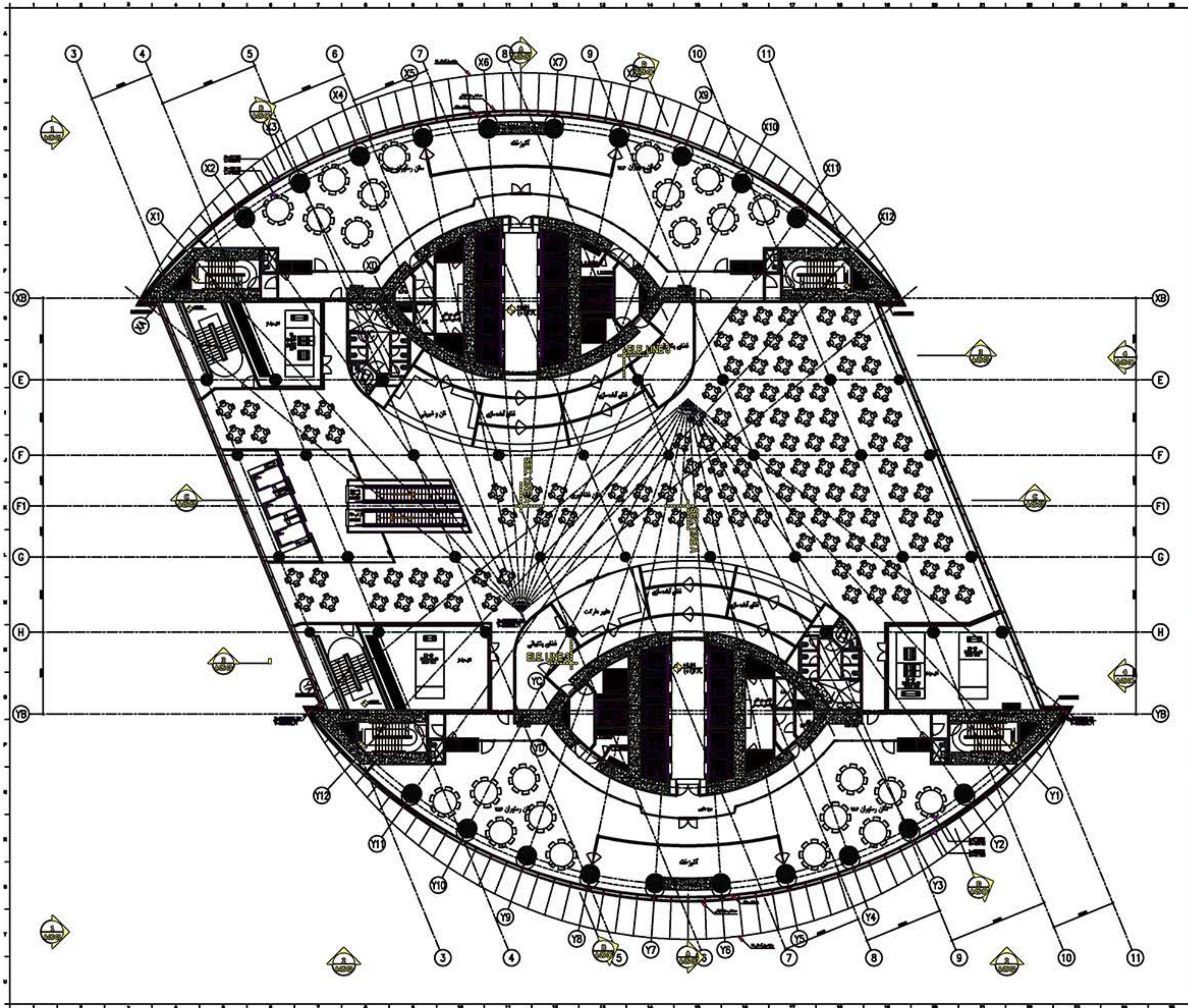


A photograph of two modern, glass-clad skyscrapers against a clear blue sky. The towers are situated on a hillside with greenery in the foreground. A semi-transparent red and purple gradient banner is overlaid on the lower portion of the image, containing the text 'Saman OFFICE TOWERS'.

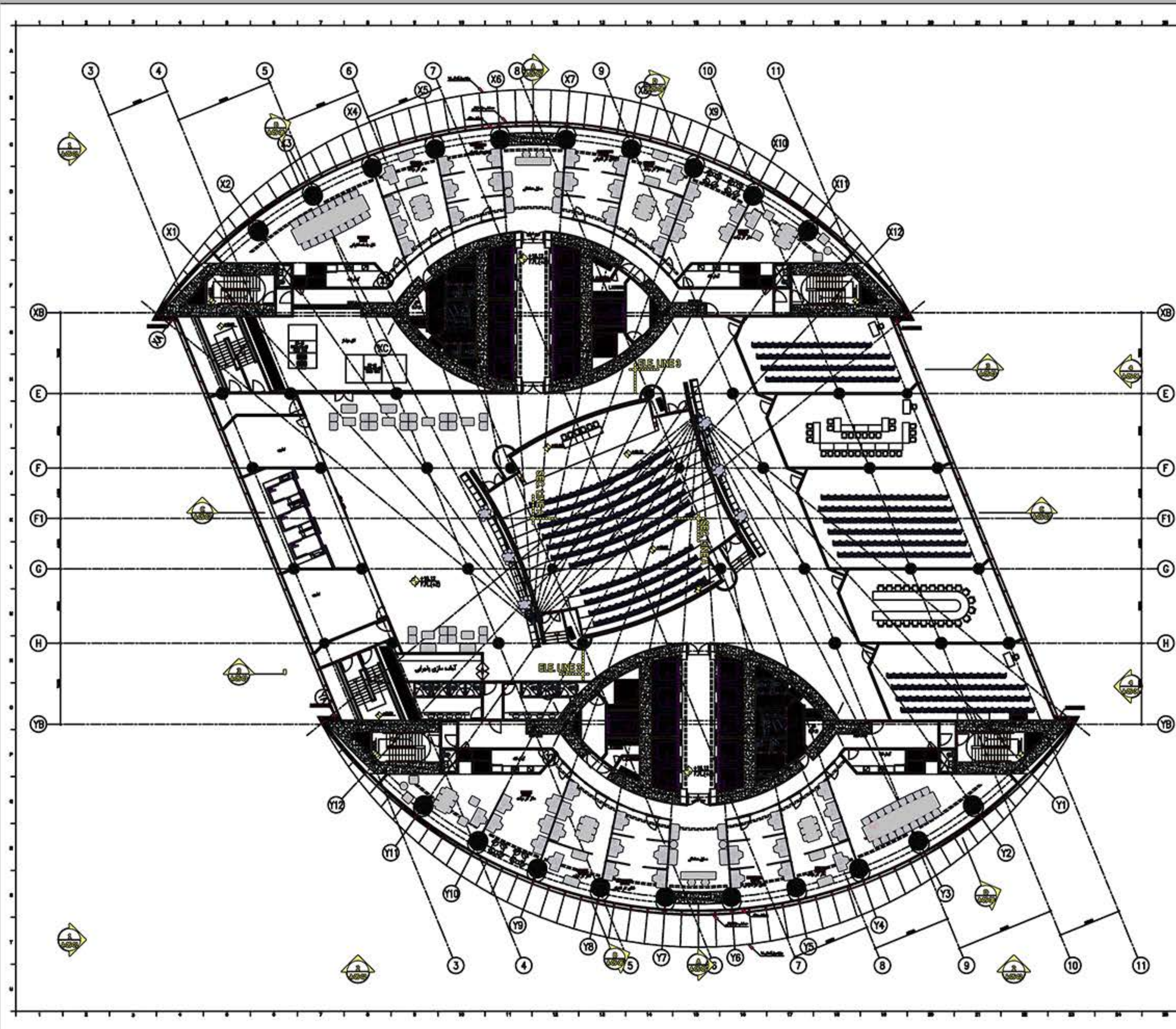
Saman OFFICE TOWERS

The Current Situation Of The Project

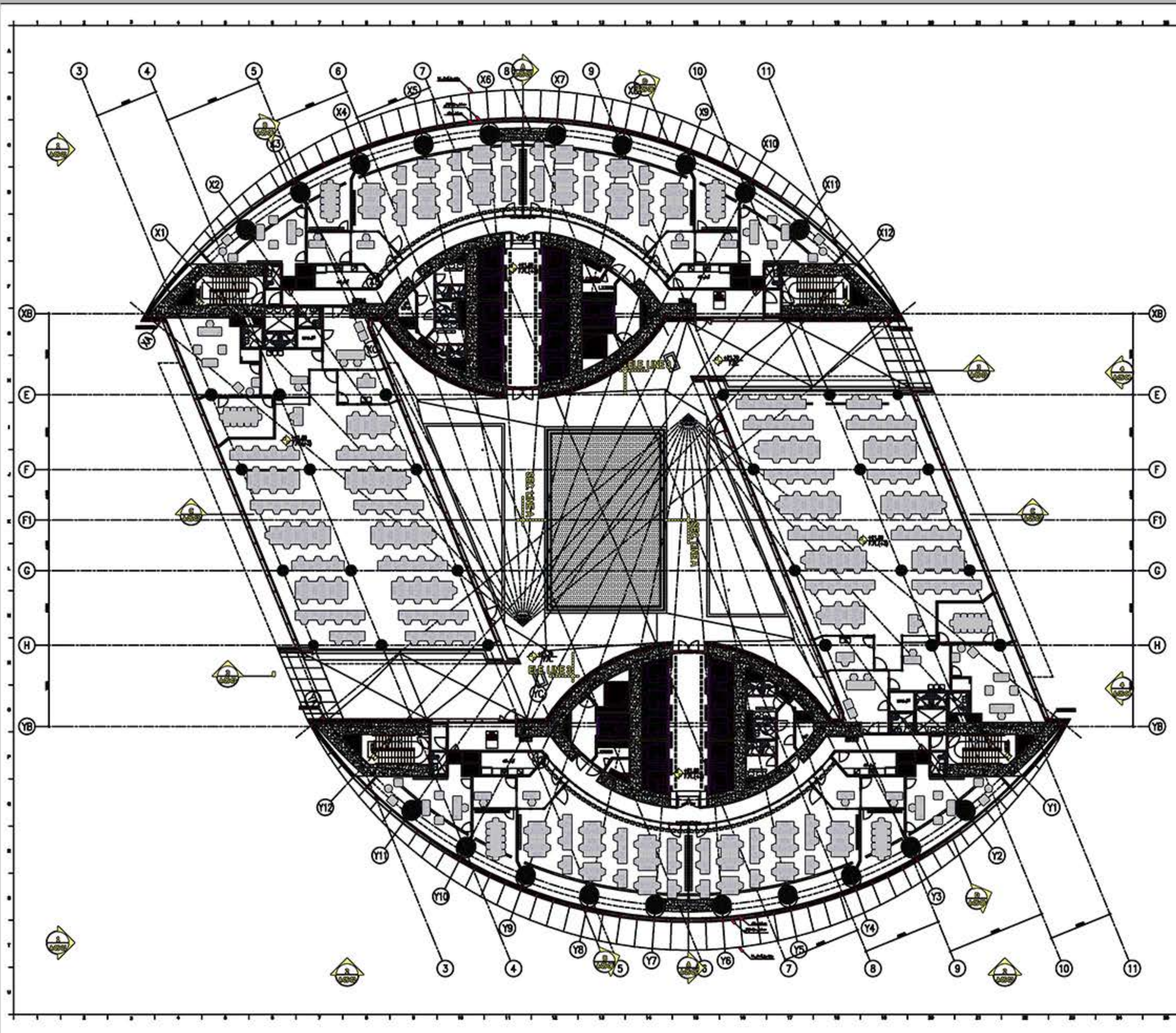




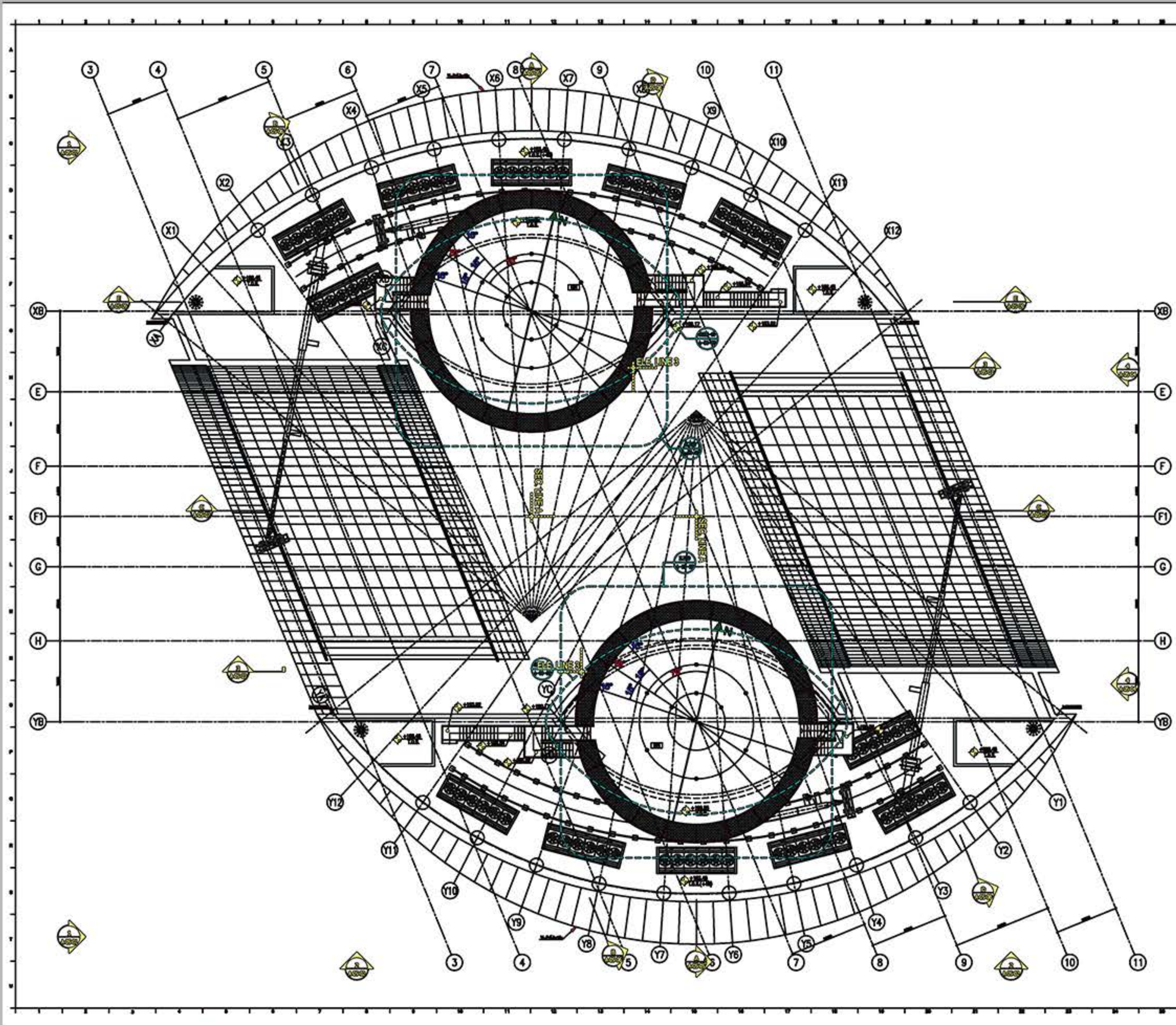
+1 Floor Plan



+2 Floor Plan



+3 Floor Plan



Plan HeliPad



THANK YOU